

SOIL STABILIZERS

STABI/FRS - STABI/FRS/HP

The essential tool for stabilization.

The STABI/FRS for tractors from 300 to 500 hp is the definition of the perfect stabilizer. With a fixed-rotor system and high productivity, it is stable and strong, even on very hard ground with stones. The STABI/FRS can be used on small work sites as well as for major infrastructural work, such as on highways, parking lots

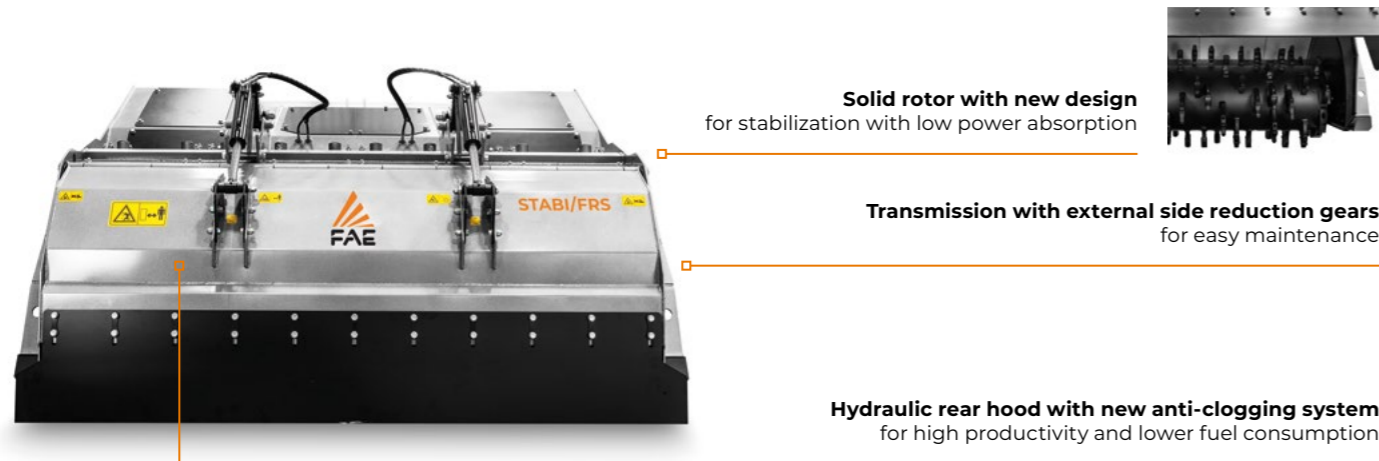
and airports. The protruding rotor facilitates stabilization at depth with minimal power absorption. The crushing chamber makes it possible to work the ground to a depth of 50 cm, ensuring an excellent mixing quality. The solid frame and use of wear-resistant materials provide excellent reliability over time.



300-500 hp



Depth 50 cm max



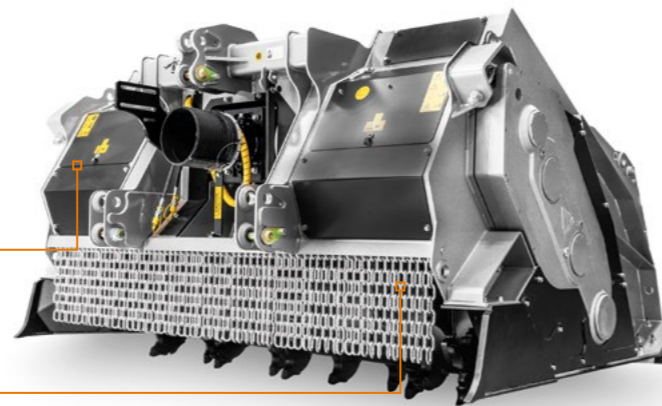
Solid rotor with new design for stabilization with low power absorption



Transmission with external side reduction gears for easy maintenance

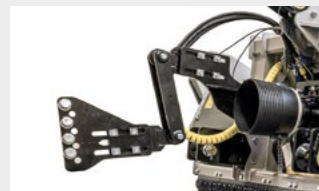
Hydraulic rear hood with new anti-clogging system for high productivity and lower fuel consumption

Oil cooling system for gearbox and side reduction gears (STABI/FRS/HP)



Interchangeable Hardox® internal and side guards

MAIN OPTIONS



W style self-aligning device between PTO drive shaft/gearbox allows the mulcher to work in several angles without damaging the PTO



Automatic FCS system for optimal soil mixing and moisture management



Dozing blade with springs system to level and compact the crushed material, creating a uniform base

STANDARD EQUIPMENT

Hydraulic rear Hood with anti-clogging system	Gearbox with freewheel
Interchangeable inner antiwear plates in Hardox®	Gearbox with oil cooling system (STABI/FRS/HP)
Enclosed machine body	PTO shaft
Inside lateral protection	Friction clutches
Protection chains	Bolted-on rotor shafts (in forged steel)
Transmission with side gearbox	Dozing blade
Side gearbox with oil cooling system (STABI/FRS/HP)	

OPTIONS

Multiple tooth options	Dozing blades with spring system
Hydraulic top link	Water spray system WSS High Flow
W style self-aligning device between PTO drive shaft/gearbox	FCS full control system

MODEL	STABI/FRS 225	STABI/FRS 250	STABI/FRS/HP 225	STABI/FRS/HP 250
Tractor (hp)	300-400	300-400	400-500	400-500
PTO (rpm)	1000	1000	1000	1000
Working width (mm)	2320	2560	2320	2560
Total width (mm)	2750	2990	2750	2990
Weight (Kg)	6300	6500	6550	6750
Rotor diameter (mm)	1085	1085	1085	1085
Max working depth (mm)	500	500	500	500
No. teeth type A/3 + STC/FP + STC/3/FP + F/3/SS/DX + F/3/SS/SX	64+4+4+2+2	68+4+4+2+2	64+4+4+2+2	68+4+4+2+2

Data refers to machine as standard. The technical data in this catalogue may be altered without prior notice.

ROTOR TYPE A



A/3 (standard)



A/3/HD (option)



F/3 (option)



F/3 R 44-42 (option)



STC/FP (side scraper)



STC/3/FP (side scraper)



F/3/SS (side scraper)